



*jordan fishwick*

445a Wilmslow Road, Manchester, M20  
Guide Price £2,167 Per Calendar Month





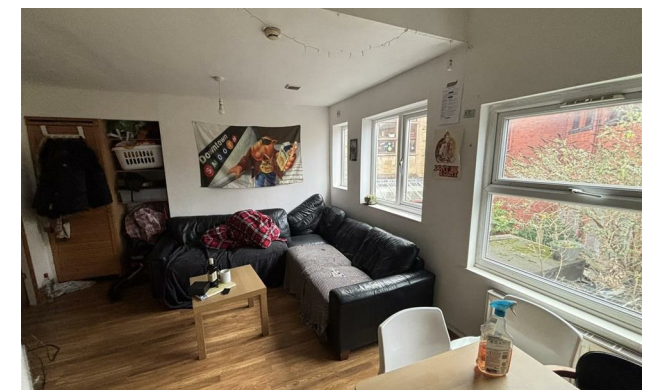
### The Property

\*\*\* AVAILABLE 1st JULY 2026 \*\*\* £125.00 PPPW INTERNET INCLUDED \*\*\* HALF RENT FOR JULY \*\*\* NO DEPOSIT OPTION AVAILABLE \*\*\* BILLS PACKAGE AVAILABLE \*\*\* Located in the heart of Withington Village on Wilmslow Road this four double bedroom apartment is perfectly positioned for bus routes, bars and shops. The property benefits from an open plan living area, separate games/spare room, modern fitted kitchen, four large double bedrooms, two shower rooms and two separate W/Cs. Each bedroom is fully furnished with a double bed, wardrobe, desk and chest of drawers. Viewings highly recommended! No Deposit Option Available. Nearby street parking only. Contact our Didsbury office to arrange a viewing

EPC Rating - D // Council Tax Band B

**Wilmslow Road M20 4AN**

**£2,167 Per Calendar Month**





- Available July 2026
- £125.00 PPPW
- Four Double Bedrooms
- Two Bathrooms
- No Deposit Option Available
- Spare Room
- Internet Included
- Bills Package Available
- Council Tax Band B
- EPC Rating D



Energy Efficiency Rating		
	Current	Potential
Very energy efficient - lower running costs		
(92 plus) <b>A</b>		
(81-91) <b>B</b>		
(69-80) <b>C</b>		
(55-68) <b>D</b>	<b>60</b>	<b>65</b>
(39-54) <b>E</b>		
(21-38) <b>F</b>		
(1-20) <b>G</b>		
Not energy efficient - higher running costs		
<b>England &amp; Wales</b>	EU Directive 2002/91/EC	





These particulars are believed to be accurate but they are not guaranteed and do not form a contract. Neither Jordan Fishwick nor the vendor or lessor accept any responsibility in respect of these particulars, which are not intended to be statements or representations of fact and any intending purchaser or lessee must satisfy himself by inspection or otherwise as to the correctness of each of the statements contained in these particulars. Any floorplans on this brochure are for illustrative purposes only and are not necessarily to scale.

Offices at: Chorlton, Didsbury, Disley, Hale, Glossop, Macclesfield, Manchester Deansgate, Manchester Whitworth Street, New Mills, Sale, Wilmslow and Withington